



DEV  
DAR

DEV  
DAR

LIFE,  
A STEP  
ABOVE



DEV  
DAR



DEV DAR

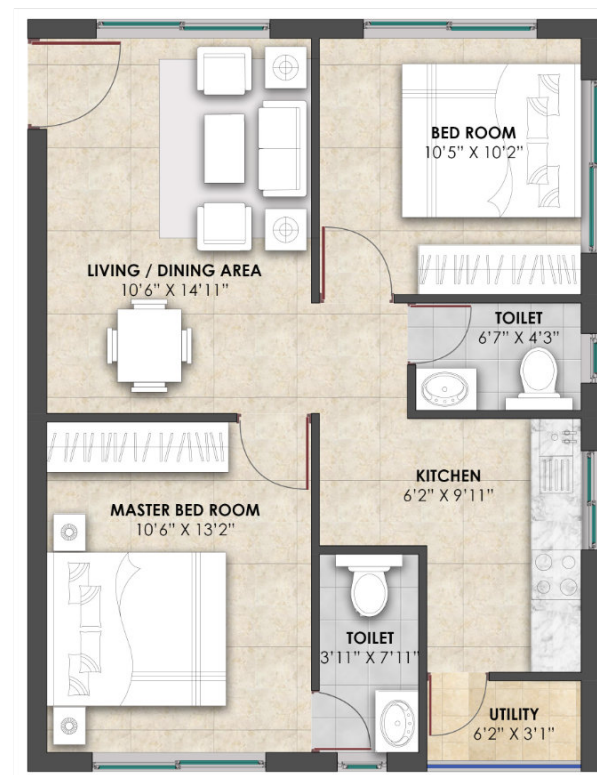
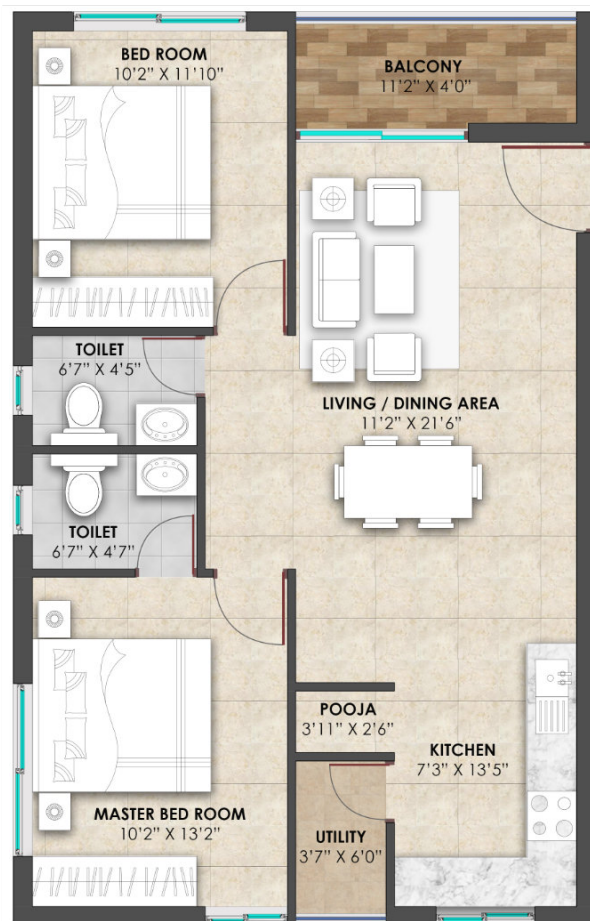


# FLOOR PLANS



## TYPE A

FLAT 01  
2BHK EAST  
AREA : 1056 SQ.FT



## TYPE B

FLAT 02  
2BHK WEST  
AREA : 847 SQ.FT

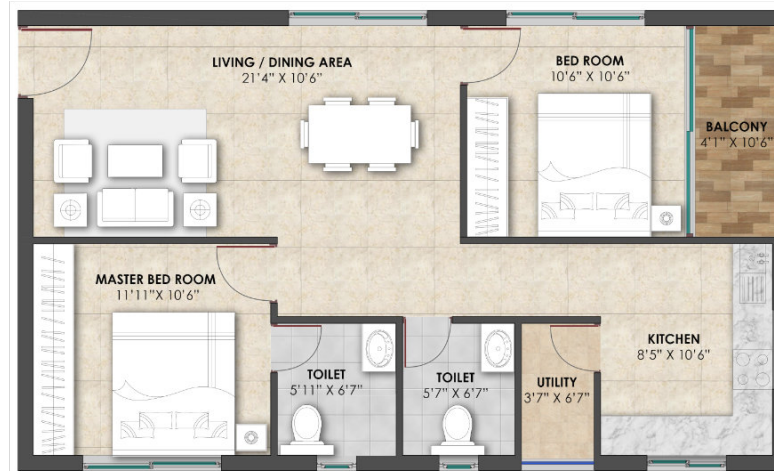
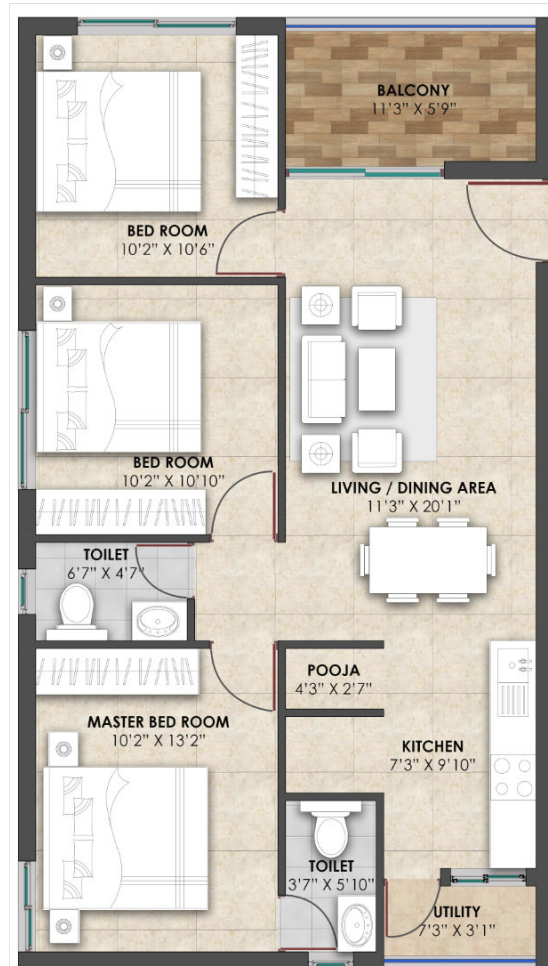


# FLOOR PLANS



## TYPE C

**FLAT 03**  
3BHK EAST  
AREA : 1196 SQ.FT

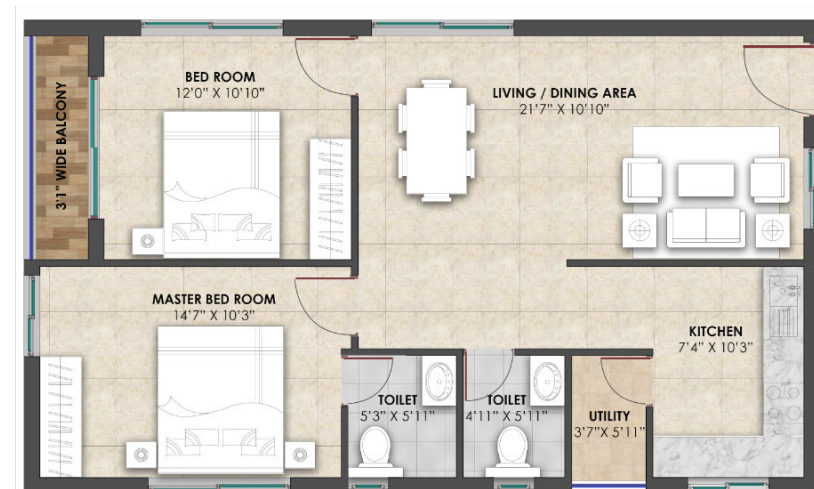


## TYPE D

**FLAT 04**  
2BHK WEST  
AREA : 1092 SQ.FT

## TYPE G

**FLAT 09 & 10**  
2BHK EAST  
AREA : 1102 SQ.FT

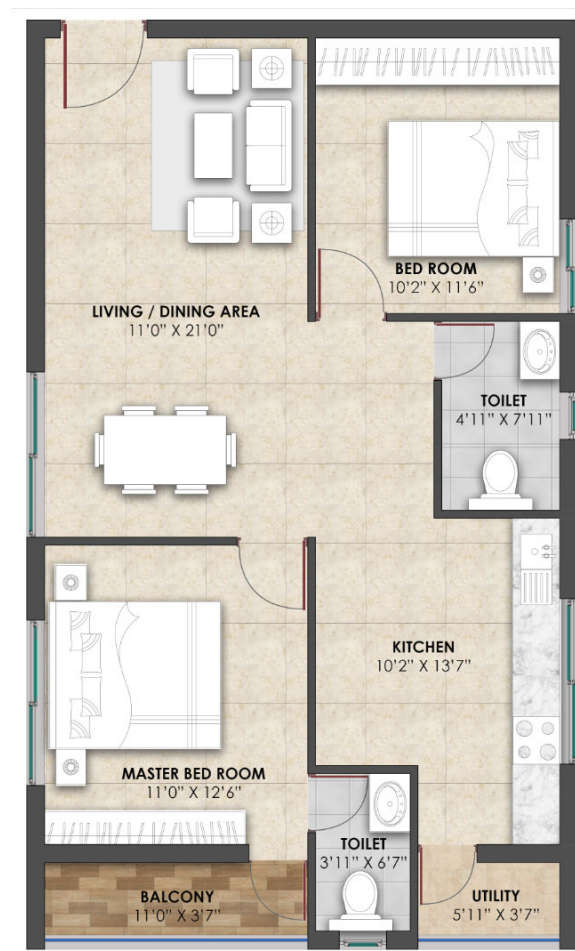


DEV  
DAR

# FLOOR PLANS



**TYPE E** FLAT 06  
3BHK WEST  
AREA 1280 SQ.FT



**TYPE F**  
FLAT 07 & 08  
2BHK NORTH  
AREA : 1111 SQ.FT



# SPECIFICATIONS

## FOUNDATION & STRUCTURAL FRAME

RCC framed structure designed to relevant IS Codes & Zone II compliance.

## SUPERSTRUCTURE

Table moulded fly ash or red bricks.

## CAR PARKING

VDF flooring or Parking tiles.

## PLASTERING

Internal : Cement plastering with sponge finish  
External : Two coats of cement plastering with sponge finish with grooves etc. as per the elevation design from Architects.

## DOORS

Main Door : Shakti Hormann  
Internal Doors : MS doors of Shakti Hormann or equivalent with hardware.  
French Doors : UPVC framed doors with 5mm float glass and all sliding panelled shutters.  
Windows : UPVC framed, shutters with float glass with suitable finishes as per design.

## PAINTING

Internal: Luppam finish with premium emulsion paint or equivalent for walls & ceiling.  
External : Exterior emulsion paint in combination with textured finishes and appropriate cladding as per elevation.

## SOLAR FENCING

Solar fencing will be provided on the boundary wall of the project

## INTERCOM FACILITY

Every unit will be provided with intercom facility.

## FLOORING

Internal : Living room, Bed rooms, Master Bed room- 600\*600 mm vitrified tiles  
Staircase : Marble/ Granite.  
Toilets & Utility : Anti skid ceramic tiles  
Terrace: Cement rendered with grooves and water proofing.

## TILES DADO

Kitchen : Ceramic Tiles dado up to 2 feet height above kitchen platform.  
Utility : Glazed ceramic tiles dado up to 3' height.  
Toilets : Glazed ceramic tiles dado up to door height.

## KITCHEN / UTILITY

Platform & Sink : Granite platform of 20 sq.ft with stainless steel sink.  
Water connections : Provision for RO , bore water supply from overhead tank. to 3' height.  
Utility : Provision for washing machine & wet area for washing utensil etc.

## TOILETS & PLUMBING

Sanitary fittings : All toilets will consist of EWC of Parryware or equivalent make.  
Taps: CP fittings of Hot and Cold water mixer with shower, ablation tap, Pillar cock for the Washbasin, Bibcock for utility, Health faucets and sinkcock will be provided in kitchen of make Jaguar or equivalent.  
Geyser points : Geyser points will be provided in all toilets.  
Conduits : CPVC and PVC conduit of Astral make.

## RAILING

Staircase : Mild steel staircase railing  
Sit out : SS Railing will be provided.  
Terrace : Parapet Wall of 30" inches height.

## CCTV CAMERAS

16 CCTV Cameras will be provided for the security purpose throughout the project.

## ELECTRICAL

Main distribution point : 3 Phase power supply with copper wiring for each unit with Meter board, necessary MCBs of Legrand switches with polycab wiring as approved.  
Bedrooms : Plug point for TV & Audio systems etc, and switches of reputed make, Power outlets for AC in bed room, Plug points. All the necessary light and fan points shall be provided as per design.  
Kitchen : Power plug for cooking range, chimney, refrigerator, microwave ovens, mixer / grinders and all necessary lights and points shall be as per design.  
Toilets : 15amps power outlets for geysers in all toilets.  
Utility : Power provision for washing machine.  
Exterior : All necessary power / lights point for parking and exterior spaces.

## CABLE TV & INTERNET

Cable TV provision in living room and Master Bedroom.  
One internet connection point in each individual unit.

## WATER SUPPLY SYSTEM

Overhead tank domestic water supply system.

## GENERATOR POWER BACK UP

Full Power Backup for all lights and fans.

## STREET LIGHTING

LED Street lighting as per the approved layout and design.

## MISCELLANEOUS FACILITIES

All miscellaneous facilities like rain water harvesting pits, STP facility, transformer yards, soft and hard landscaping etc. to be provided in accordance to the design details provided by architectural consultants.

## WATERPROOFING

Waterproofing will be done on the terrace, toilets and utility areas.





# LOCATION MAP





# PROJECTS BY BONSAI HOUSING





# DEV DAR



**bonsai**  
mnp housing

**Corporate Office**

4th floor, ARK Chambers, Kavuri Hills,  
Phase 1, Madhapur, Hyderabad,  
Telangana - 500033  
[www.bonsaihousing.com](http://www.bonsaihousing.com)

**Siddipet Office**

H.No: 7-4-32/3, First Floor, Above VST  
Shakthi Tractor Showroom, Maithrivanam,  
Hyderabad Road, Siddipet - 502103  
+91 91210 88333

**Architectural Design**

**design hub**